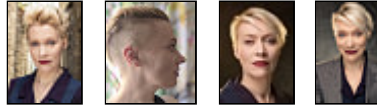




Photo: Chris Bailey

EMILY CARDING



NEW WONDER MANAGEMENT LTD

3-4 Devonshire Street, Marylebone, London W1W 5DT

Phone: 020 3102 8515

Mobile: 07904 917879

E-mail: info@newwondermanagement.co.uk

WWW: www.newwondermanagement.co.uk

Location:	East Sussex, England, United Kingdom Greater London, England, United Kingdom	Appearance:	Scandinavian, White, Eastern European
Height:	5'8" (172cm)	Nationality:	British
Weight:	10st. (64kg)	Eye Colour:	Blue-Grey
Playing Age:	38 - 49 years	Hair Colour:	Blond(e)
		Hair Length:	Short
		Voice Character:	Engaging
		Voice Quality:	Strong

About me:

Reviews:

Apparatus: "A notable attraction of the production is Emily Carding... her performance as the Officer is captivating; her devotion both to the "apparatus" itself and her previous superior, the Old Commandant, as convincing as it is unnerving...Carding is genuinely amusing in her misty-eyed reminiscence of the executions of yore" - The Telegraph

Richard III : "an extraordinary performance from Emily Carding, a female Richard as bitter, damaged, ingenious and irresistible as any I've ever seen."- Joyce McMillan, The Scotsman

Quintessence: "A formidable performance"- The Stage

Stage

Stage, Ariel, QUINTESSENCE, Sweet Productions/Emily Carding, Dominique Gerrard

Stage, Kath Duncan, LIBERTY, Red Blouse Theatre, Karen Douglas

Stage, The Officer, FRANZ KAFKA'S APPARATUS, Blue Devil, Ross Dinwiddy

Stage, Hamlet, HAMLET (AN EXPERIENCE), Brite Theater, Kolbrun Bjort Sigfusdottir

Stage, Caliban, CALIBAN'S CODEX, Fetch Theatre, John Knowles

Stage, Richard III, RICHARD III (A ONE-WOMAN SHOW), Brite Theater, Kolbrun Sigfusdottir

Stage, Hamlet, HAMLET, Theatre Nation, Patrick Kealey

Stage, Bolingbroke, RICHARD II, Bronzehead Theatre, Tom Straszewski

Stage, Hamlet, POTTED HAMLET, Shakespeare's Globe, Tatty Hennessy

Stage, Mephistopheles, DR. FAUSTUS (MARLOWE), Four of Swords, Sarah White

Stage, Prospero, Titus, Goneril, Richard III, Iago, SHAKESPEARE IN HELL, EXETER NORTHCOTT, Brite Theater and So Potent Arts, Kolbrun Sigfusdottir

Stage, Oberon/Theseus, A MIDSUMMER NIGHT'S DREAM, Midsummer Madness Theatre Company, Brooke Hess Grant

Stage, Tamora, TITUS ANDRONICHUS, Brite Theater, Kolbrun Sigfusdottir

Stage, Beatrice, MUCH ADO ABOUT NOTHING, Midsummer Madness Theatre Company, Melissa Barrett

Stage, Mercutio, ROMEO AND JULIET, Staging Shakespeare, Martin Harvey

Stage, Eleanor/Bastard, KING JOHN, Shakespeare's Globe Education, Philip Bird

Stage, Jadis (White Witch), THE LION, THE WITCH AND THE WARDROBE, Brite Theater and Midsummer Madness, Kolbrun Sigfusdottir

Stage, Goneril, KING LEAR, Brite Theatre, Kolbrun Sigfusdottir

Stage, Leni/ Miss Burstner/ Franz, THE TRIAL, Independent Arts, Chris Harknett

Stage, Leontes, THE WINTER'S TALE, Shakespeare's Globe education, Philip Bird
 Stage, Olivia, TWELFTH NIGHT (AT RSC'S THE DELL), Midsummer Madness Theatre Company, Ensemble
 Stage, Portia, MERCHANT OF VENICE, Cambridge Shakespeare Company, Simon Bell
 Stage, Evelyn, ABSENT FRIENDS, 3I Theatre Company, Richard Payne
 Stage, Jenny Wilbur, KNUCKLE, 3I Theatre Company, Richard Payne
 Stage, Titania, A MIDSUMMER NIGHT'S DREAM, Elysium Theatre Company, Ellie Chadwick
 Stage, Audrey, AS YOU LIKE IT, Elysium Theatre Company, Ellie Chadwick

Film

Feature Film, Maria Priddle, GHOST STORIES, Warp Films, Andy Nyman and Jeremy Dyson
 Feature Film, Kayla, LAST CHANCERS, Dark Escape Films, Phil Stubbs
 Feature Film, Caroline Hughes, FROM THE GROUND, King-Collins, Luke Abbot
 Feature Film, Lady Ross, MACBETH, Green Screen Productions, Kit Monkman
 Film, Somnambulist, GABRIEL CUSHING AT THE CARNIVAL OF SORROWS, Great Escapes, Mark Adams
 Feature Film, Donna, SCAREYCROWS, Inspired toad productions, Jamie Townsend.
 2020, Film, Ella, THE NIGHTTIME WORLD, Timothy Paul Taylor
 2020, Film, Lady Summers (Judge), PENITENT, Stephen Oxborrow

Short Film

Short Film, Chloe, CLOANED, Paul Parncutt
 Short Film, Parker, LYSSA, Infectious Madness Productions, Zandie Thornton
 Short Film, Fairy Queen's Handmaiden, TAM LIN, Fairytale Films, Elizabeth-Jane Baldry/ Maxine Fone

Commercial

Commercial, Gallery visitor, EUROSTAR COMMERCIAL, Patrick Daughters
 Commercial, Hostess, COMMAND HOOKS TV IDENT, Discovery Channel

Further Credits

2020, Web Series, Boyet, LOVE'S LABOURS LOST, The Show Must Go Online, Robert Myles
 Web Series, Lucetta, THE TWO GENTLEMEN OF VERONA, The Show Must Go Online, Robert Myles
 Corporate, Expert One, SHELL'S GADUS GREASE, Plastic Pictures, James Wooley
 Film school, Simona (co-lead), SUGARBABIES, NFTS, Leo Lebeau
 Radio, Kes, THE OTHER 1% (AUDIO DRAMA SERIES, MULTIPLE EPISODES), TBC Audio, Simon Moorhead
 Radio, She, THE GRAY AREA (HELLO), The Gray Area (Brooklyn), Ed Champion
 Comedy, Eddie/Patsy, FAB AB (ABSOLUTELY FABULOUS COMEDY DINING), Comedy Dining, Madcap Theatre
 Pantomime, Giant's Housemaid (puppetry), JACK AND THE BEANSTALK, Rye Creative Centre, Jeremy Tustin
 Street Theatre, Surge Herder, ON TENTERHOOKS, Ocean All Over, Alex Rigg
 Rehearsed Reading, Herself/multi-role, WAKE THE WITCH, Sarah-Louise Young
 Rehearsed Reading, Woman, MARIE CELESTE AND THE BEAST OF THE BOWERY, John Knowles

Skills:

Accents & Dialects: American-Southern States, American-Standard, English-Standard*, Irish-Northern, Northern, RP, (* = native) Scottish-Standard, Stoke-on-Trent*

Languages: English*, French (* = Native/Fluent)

Music & Dance: A Cappella, Belly Dancing, Blues, Coloratura mezzo-soprano, Rock Singing (* = highly skilled)

Performance: Actor-Singer, APC Basic Rapier & Dagger, APC Basic Single Sword, APC Basic Unarmed, Living History, Outdoor Performances, Professional Singer, Scare Actor, Story Telling, Voice Acting, Voice Over

Vehicle Licences: Car Driving Licence

Other Skills: Artist (Fine Art), Artistic Director, Improvisation, Lyricist, Painting, Photography, Poi, Puppetry-Hand, Reiki, Shamanic Practitioner (qualified), Story Telling, Tarot Reading, Writer

Vocal Range: Eb₃ to C₆ (belt to E_{b5})

Training:

Bretton Hall, Theatre Arts BA Hons, 3 years, 1994 - 1997

University of Exeter MFA Staging Shakespeare 2012- 2014

SPOTLIGHT • 7 Leicester Place, London WC2H 7RJ • Tel: 020 7437 7631 • www.spotlight.com
Copyright © 2020 Spotlight. The information in this profile has been provided by or on behalf of the member concerned.
Whilst every effort has been made to ensure that the information is correct Spotlight cannot accept responsibility for its accuracy.